

There's a Guy Works Down the Chip Shop Swears He's Elvis

Count

Intro

$\text{♩} = 110$

Verse 1

$\text{♩} = 174$

5 *A*

Oh, darling why'd ya' talk so fast

9 *E*

a- nother eve-ning just flew past to- night and

13

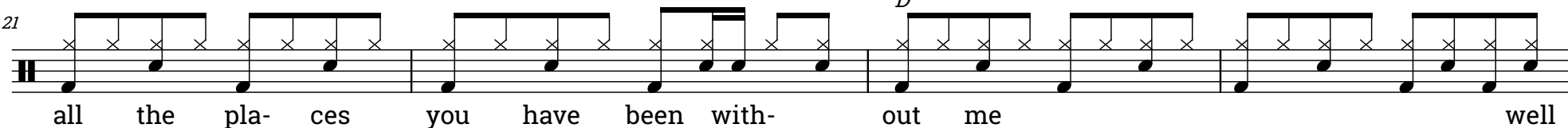
now the day break's coming in and I can't win and it ain't

17 *A*

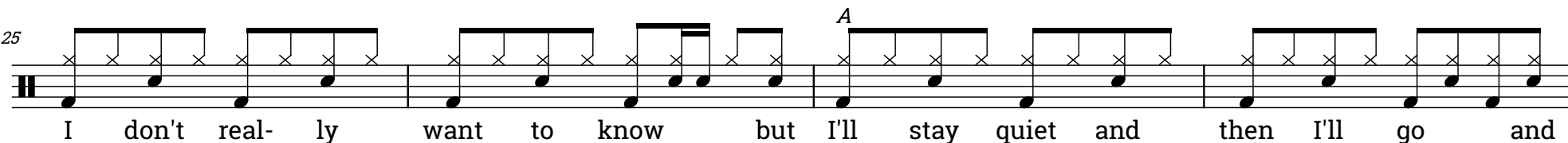
right you tell me all you've done and seen and

2

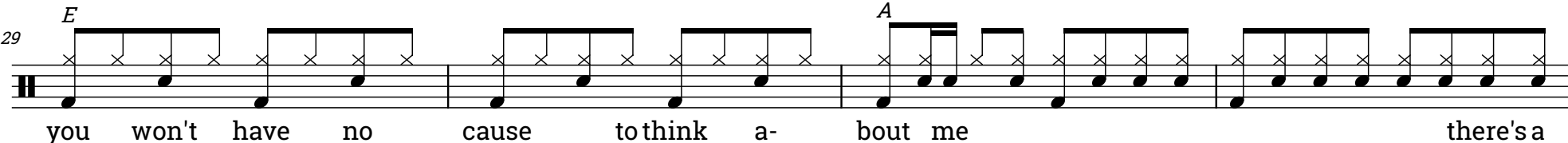
21



25

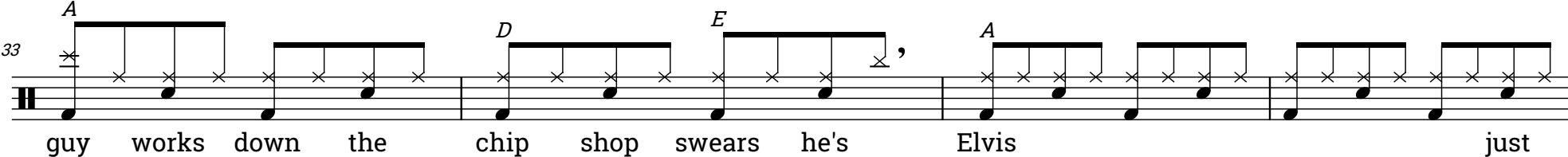


29

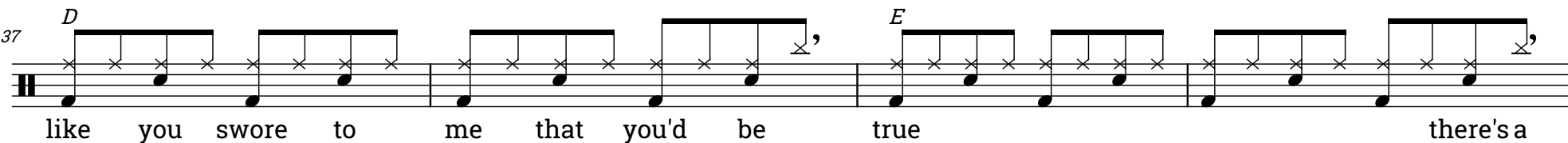


Chorus

33



37



41 *A* *D* *E* *F#m* *D* 3
guy works down the chip shop swears he's Elvis but

[illegible]

(Verse 2)

49 **A**

darling you're so pop- u- lar you were the best new thing in

Detailed description: This image shows the musical notation for the vocal line of the song 'You're So Popular' by The Beatles. It is the first system of the score, starting at measure 49. The notation is on a single staff with a treble clef. The melody consists of eighth and quarter notes. Above the staff, there are several 'x' marks indicating fingerings. The lyrics are written below the staff: 'darling you're so pop- u- lar you were the best new thing in'. The system is labeled '49' and 'A'.

53 *E*

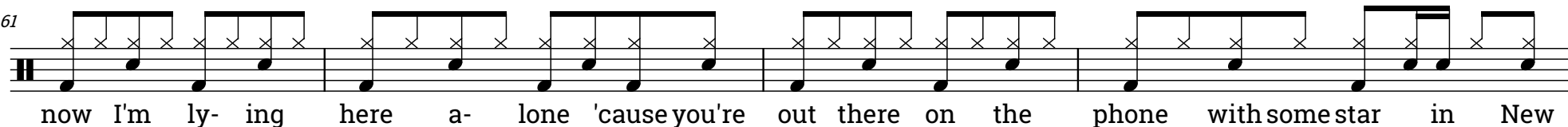
Hicksville with your mo-hair suits and fo- reign shoes

The musical notation is on a single staff with a treble clef. It begins with a key signature of one sharp (F#) and a common time signature (C). The melody consists of eighth and sixteenth notes, with some notes beamed together. Above the staff, there are several horizontal lines with 'x' marks, likely indicating fingerings or breath marks. The lyrics are written below the staff, aligned with the notes.

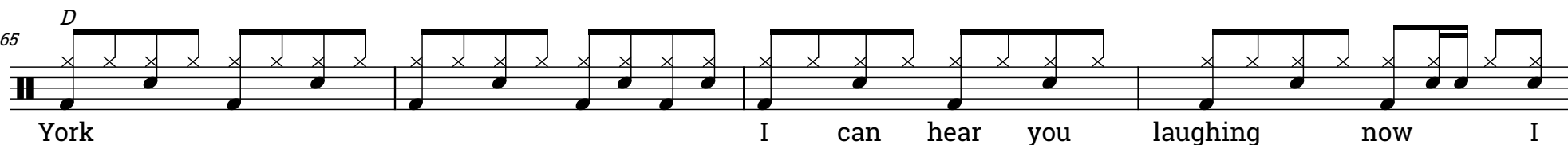
57  Lou says you've changed your pick-up for a Seville and

4

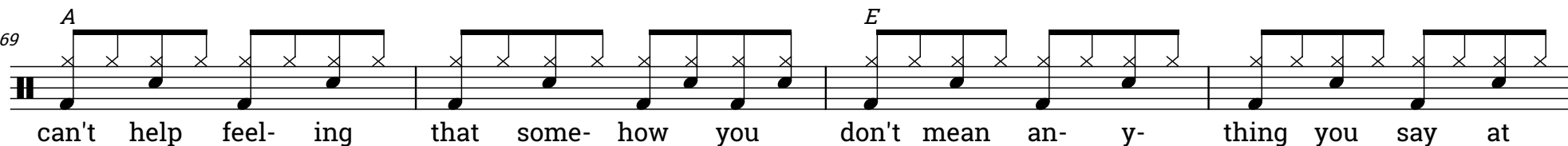
61



65

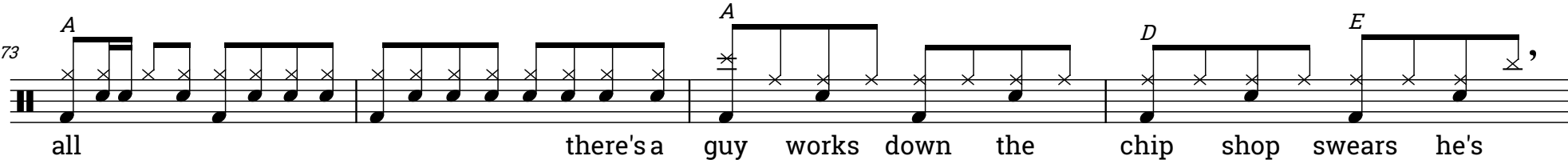


69

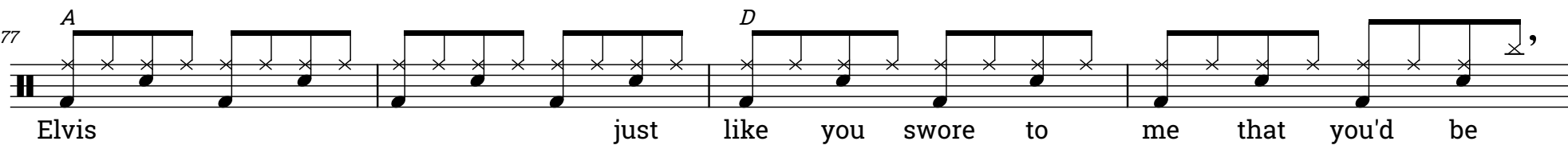


Chorus

73



77



81 *E* *A* *D* *E* 5

true there's a guy works down the chip shop swears he's

85 *F#m* *D* *A* *E*

Elvis but he's a liar and I'm not sure about

Solo
(Chorus)

89 *A* *A* *D* *E*

you

93 *A* *D*

97 *E* *A* *D* *E*

6
101

F#m *D* *A* *E*

Chorus

105

A *A* *D* *E*

there's a guy works down the chip shop swears he's

109

A *D*

Elvis (Oh, ah ha) just like you swore to me that you'd be

113

E *A* *D* *E*

true there's a guy works down the chip shop swears he's

117

F#m *D* *A* *E*

Elvis but he's a liar and I'm not sure about

Outro

121

you I said he's a liar and I'm not sure about

125

you I said he's a liar and I'm not sure about

129

you oo oo he's a liar and I'm not sure about

133

you